

WATER DETECTION WARNING SYSTEMS

Wet, slippery, and/or flooded roads are killers. Every state has areas or roads that experience occasional flooding or become dangerous when wet. ELTEC's low maintenance sensor detects both conditions forewarning motorists.

HIGH WATER WARNING

ELTEC's system utilizes a pole mounted sensor housed in galvanized piping positioned at the desired high water detection point. When water touches the sensor level, the two stainless steel electrodes send a signal to the transmitter, which in turn activates the flashing road beacons. The LED's flash continuously as long as the flood waters are detected.



High water road sensor triggers advanced warning signals



Advance high water warning — Road sensor around the corner



Detector pole with sensor and transmitter



Pole on other side of road with receiver only

Multiple sensors can be mounted on the detector pole triggering specific events with each level of flooding. For example, the lowest sensor would turn ON the flashing LED's; the higher mounted sensor would lower gates, etc.

FEATURES and BENEFITS

- No moving parts; mechanical float switches can jam
- Immune to trash and debris
- Doesn't wear out (no mechanical float switches)
- Immune to corrosion/won't rust
- Operates in salt/sea, brackish and fresh waters
- Waterproof pole housing; wires not exposed to water
- Intrinsically Safe: no Sparks
- Activates flashing beacons as long as flood water is detected



Sensor inside galvanized pipe

Additional devices such as a camera or radio can be added enhancing its' value.

Radio communication can:

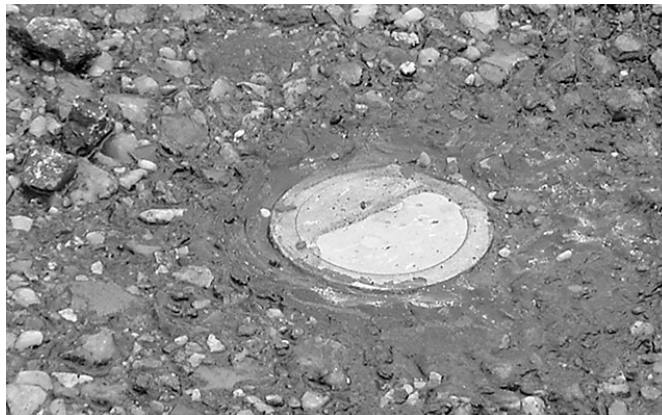
- Send alerting emails through the internet
- Report flooding to a central location
- Make phone calls with a pre-recorded message announcing the specific site

Each system is customized to insure optimal performance and can be AC or DC powered.

WET ROAD WARNING

Some curves on roads are extremely slippery when wet. A road side embedded sensor warns motorists to SLOW DOWN or SLIPPERY WHEN WET prior to reaching the area.

ELTEC's sensor is embedded in the pavement near the outside edge of the roadway shoulder, or if impractical, installed in a concrete core along side the road. In either case the top surface of the sensor is level and flush with the surrounding pavement. A wire connects the sensor to the flashing beacon pole for distances up to 50 feet.



Wet Road Sensor Embedded in Street

ELECTROTECHNICS CORPORATION

1310 Commerce Street
Marshall, TX 75672

800-227-1734 903-938-1901 Fax 903-938-1977

sales@elteccorp.com